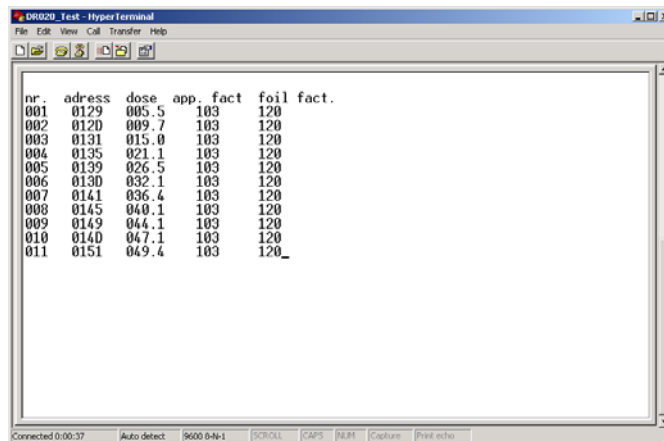


How to import data from Crosslinking Dose Reader DR-020 into a spreadsheet program (Excel).

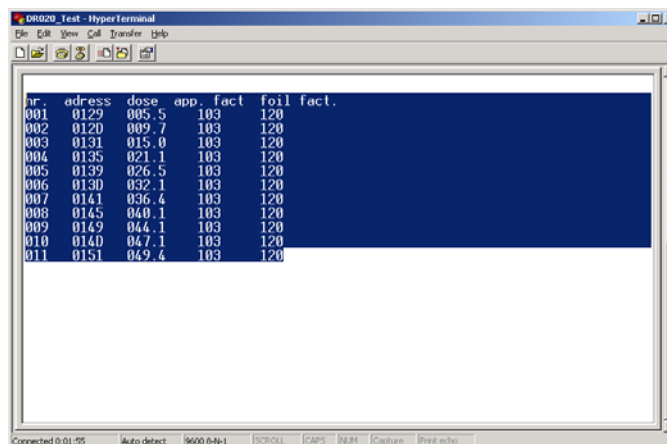
1. You have to set up the HyperTerminal in accordance to the “Operating manual for the dosimeter type DR020”
2. Open the Hyper Terminal with the actual data.



```

DR020_Test - HyperTerminal
File Edit View Call Transfer Help
[Icons]
nr.  adress  dose  app. fact  foil fact.
001  0129  005.5  103  120
002  0120  009.7  103  120
003  0131  015.0  103  120
004  0135  021.1  103  120
005  0139  026.5  103  120
006  0130  032.1  103  120
007  0141  036.4  103  120
008  0145  040.1  103  120
009  0149  044.1  103  120
010  0140  047.1  103  120
011  0151  049.4  103  120_
Connected 0:00:37  Auto detect  9600 8-N-1  SCROLL  ICAPS  NUM  Capture  Print echo
  
```

3. Mark and copy (*Ctrl + c*) the data you want to transfer.



```

DR020_Test - HyperTerminal
File Edit View Call Transfer Help
[Icons]
nr.  adress  dose  app. fact  foil fact.
001  0129  005.5  103  120
002  0120  009.7  103  120
003  0131  015.0  103  120
004  0135  021.1  103  120
005  0139  026.5  103  120
006  0130  032.1  103  120
007  0141  036.4  103  120
008  0145  040.1  103  120
009  0149  044.1  103  120
010  0140  047.1  103  120
011  0151  049.4  103  120
Connected 0:01:55  Auto detect  9600 8-N-1  SCROLL  ICAPS  NUM  Capture  Print echo
  
```

4. Open your Excel spreadsheet.

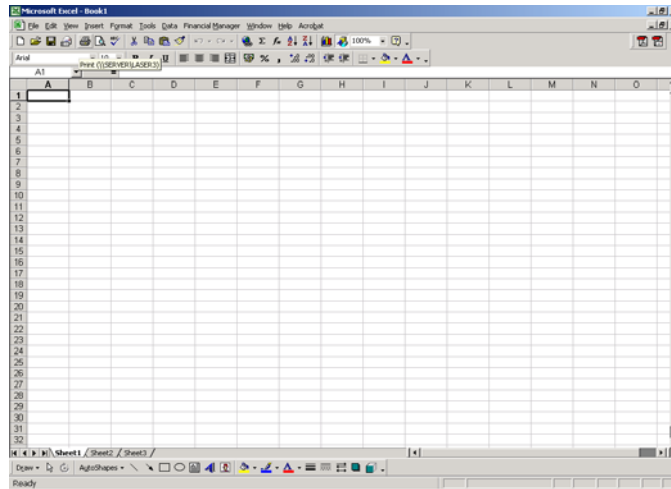
ELECTRON CROSSLINKING SERVICE AB

Sweden - Head office
 Skyttevägen 42
 SE-302 44 Halmstad

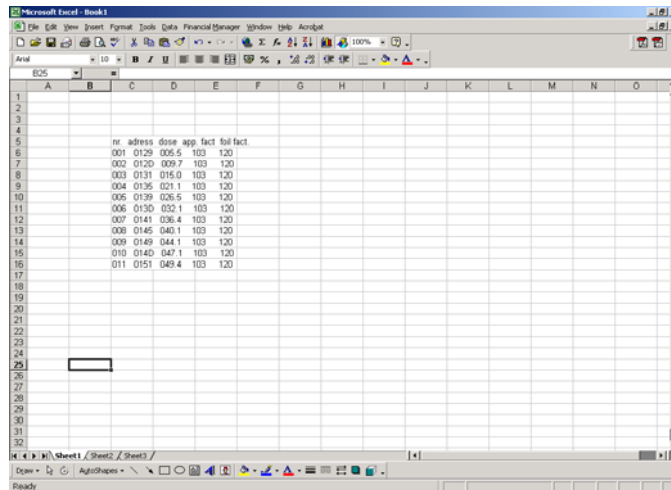
Telefon/Phone
 +46 (0)35 15 71 30
 Telefax
 +46 (0)35 14 82 06

Germany
 Brühlstraße 7
 DE-72147 Nehren

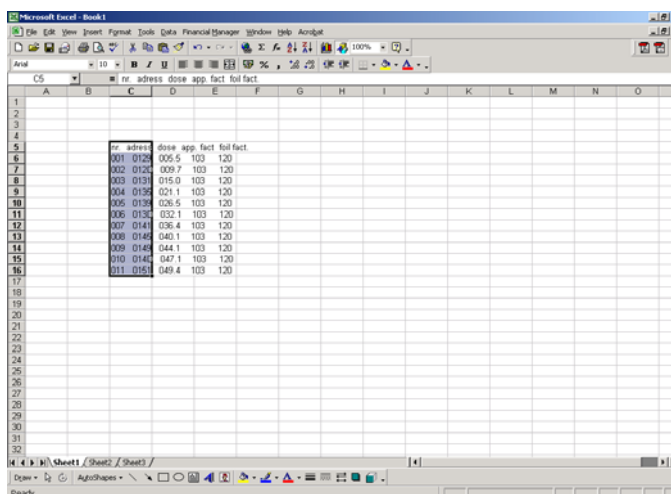
Telefon/Phone
 +49 (0)7473 920 281
 Telefax
 +49 (0)7473 920 282



5. Mark a cell and Past (*Ctrl – v*) in your data.



6. Mark your data.



ELECTRON CROSSLINKING SERVICE AB

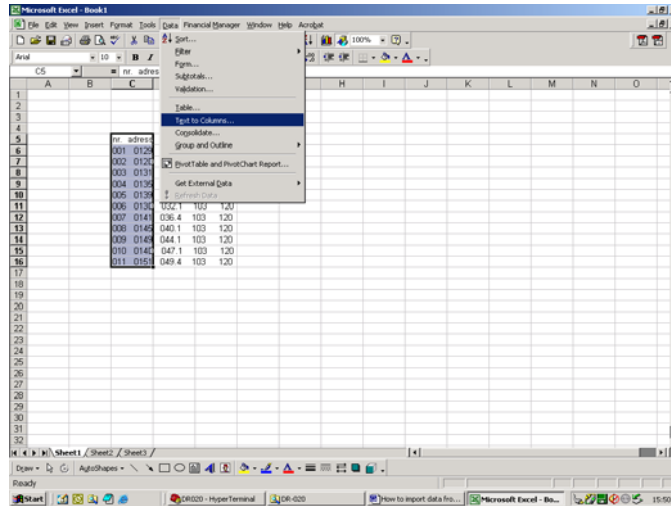
Sweden - Head office
 Skyttevägen 42
 SE-302 44 Halmstad

Telefon/Phone
 +46 (0)35 15 71 30
 Telefax
 +46 (0)35 14 82 06

Germany
 Brühlstraße 7
 DE-72147 Nehren

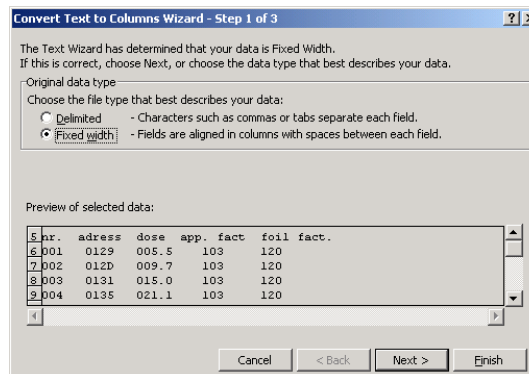
Telefon/Phone
 +49 (0)7473 920 281
 Telefax
 +49 (0)7473 920 282

7. Go to “Data” – “Text into Columns...”

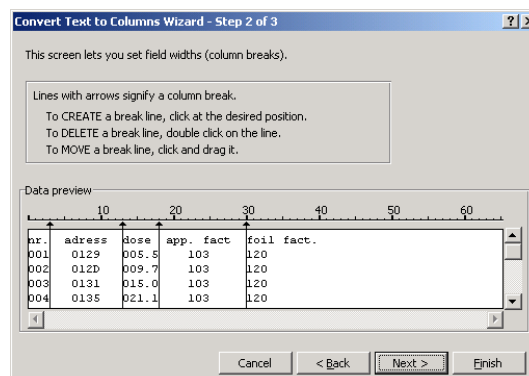


7. Convert Text to Columns Wizard will start.

Mark the “Fixed width” and press “Next”.



Adjust the Column Break and press “Next”



ELECTRON CROSSLINKING SERVICE AB

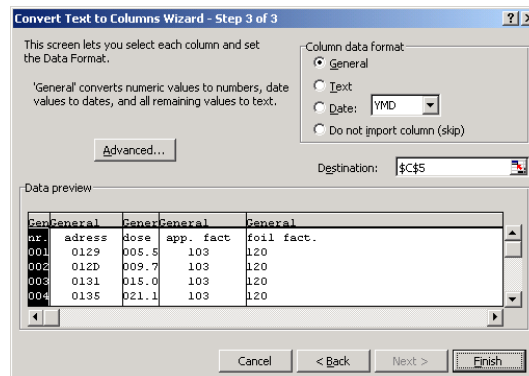
Sweden - Head office
 Skyttevägen 42
 SE-302 44 Halmstad

Telefon/Phone
 +46 (0)35 15 71 30
 Telefax
 +46 (0)35 14 82 06

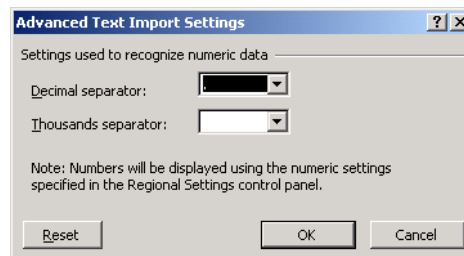
Germany
 Brühlstraße 7
 DE-72147 Nehren

Telefon/Phone
 +49 (0)7473 920 281
 Telefax
 +49 (0)7473 920 282

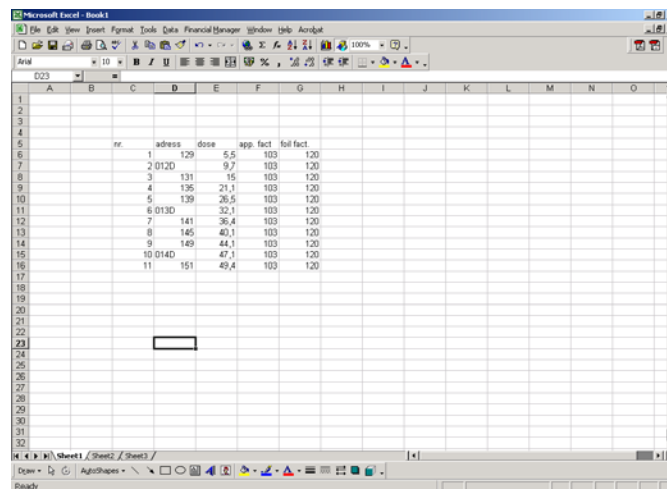
Use the “General” Column data format and press “Advanced”.



Change the Decimal separator to . and press “OK” and then “Finish”



13. Now you will have your data into the spreadsheet for further processing, se below.



ELECTRON CROSSLINKING SERVICE AB

Sweden - Head office
 Skyttevägen 42
 SE-302 44 Halmstad

Telefon/Phone
 +46 (0)35 15 71 30
 Telefax
 +46 (0)35 14 82 06

Germany
 Brühlstraße 7
 DE-72147 Nehren

Telefon/Phone
 +49 (0)7473 920 281
 Telefax
 +49 (0)7473 920 282